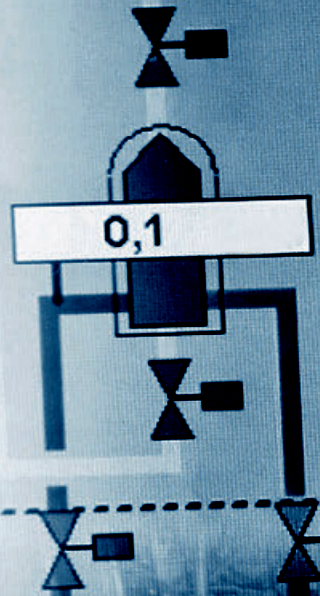


CID LINES®

EQUIPMENT CATALOGUE

Professional equipment to make hygiene work



WE
MAKE
HYGIENE
WORK

CID LINES manufactures and supplies a very wide range of sophisticated cleaning, care and disinfection aids for the transportation, food and agricultural sector. In our professional laboratories, specialised chemists and engineers continuously try to improve our products, keeping in mind your specific hygiene needs. While doing so, they apply the strictest quality control standards, such as: ISO 9001:2000 and GMP Pharma-certified production methods.

Since its foundation in 1988, **CID LINES** has shown exponential growth and the company has opened subsidiaries in France, Poland and Spain. **CID LINES** exports its products to more than 90 countries worldwide. This worldwide recognition guarantees our quality and yield.

In order to be able to guarantee an optimal quality of our products when applying them, we have added a complete material and service department to our enterprise. This catalogue gives you a global overview of the materials we have to offer. This department also helps you with the installation and maintenance of your equipment.

CONTENT

	Spraying and foaming	4
	Sprays and foams: accessories	10
	Pressurization systems	14
	Area disinfection: fogging	16
	Personal hygiene	18
	Dispensers	22
	Dosing systems	24
	CIP (cleaning in place)	28
	Animal hygiene	30
	Carwash	32
	Accessories packaging	34
	Measuring instruments	36



LOW-PRESSURE INSTALLATIONS



Pro Wash

Designed to clean and disinfect floors and surfaces in the food industry and the institutional sector, retail and health care.

- supplied with 1 holder for 2 x 5 litre bottles + BA separator
- 2 products: for cleaning, rinsing and disinfecting

Pro Wash	
article n°	CEP200HA0000000
operating temperature:	60°C Max
working pressure	0,5 - 5 bar
mixing ratio	0,50% - 10,90%



Satellite

Satellite to be connected to the water distribution system to rinse and remove foam or to rinse and disinfect. This satellite is provided with water under low pressure and compressed air.

	SL111A	SL111Z	SL111AZ
description	LD satellite with compressed air (alkaline)	LD satellite with compressed air (acid: viton)	LD satellite with compressed air (alkaline + acid: kalrez)

MIDDLE AND HIGH PRESSURE SATELLITE

Standard satellite for rinsing, foaming and disinfecting. This satellite is provided with water under pressure and compressed air and can be connected to any mother unit or pressure increasing network. Different versions are possible. This satellite can also be mounted on a mobile frame with or without reel.

- these satellites are delivered with a lock so they cannot be disadjusted by unauthorized persons.
- standard satellites, others are available upon request.



	SM111	SH111	SHH111
rinsing	yes	yes	yes
foaming	yes	yes	yes
disinfection	yes	yes	yes
pressure	15 - 40 bar	40 - 100 bar	100-150 bar
water connection	3/4"	3/4"	3/4"
connection compressed air	1/4"	1/4"	1/4"
water consumption when foaming/fogging	10 L	10 L	10 L
water consumption when rinsing	30/40 L	30/40 L	30/40 L
compressed air consumption	ca. 200 L/min	ca. 200 L/min	ca. 200 L/min
dimensions	400 x 350 x 200 mm	400 x 350 x 200 mm	400 x 350 x 200 mm
weight	ca. 20 kg	ca. 20 kg	ca. 20 kg

MOBILE SATELLITE

The Twin Foamer

The Twin Foamer consists of a handy Twin Foam Trolley and Twin Foam Injector. On the Twin Foam Trolley there is room for two drums of product (Kenōsan & Virocid®). The Twin Foam Injector ensures the correct and low dosage of your products with the right nozzle. Use the lever on the injector to choose the required product on the left or right. On the middle setting you get just water at high pressure. There is a choice of three injectors, depending on the desired flow (liters per minute / bar). The two front legs ensure high stability, while the two rear wheels ensure easy manoeuvrability. With the compact dimensions you can go through narrow passages. This combination ensures ultimate ease of use. Once you are introduced to The Twin Foamer, you will not want to be without it again!



description	foam/disinfection cart ST164 + foam lance ST75
article n°	0.9.890.01.000

Mobile satellite - middle or high pressure with compressed air

This mobile cleaning system offers a solution when it is not possible to install a fixed cleaning system throughout the company or when only a limited number of people is responsible for cleaning.

The traditional satellite is mounted on a solid stainless steel frame. This frame has 2 fixed and 2 castor wheels. It can rinse, foam and disinfect. The unit must be provided with water under increasing pressure and compressed air.

	MSM111	MSH111	MSHH111
description	mobile medium pressure satellite	mobile high pressure satellite	mobile high pressure satellite
pressure	15 - 40 bar	40 - 100 bar	100 - 150 bar

OPTIONS

	MSM111 MS30	MSM111 AS20	MSM111 AS25
description	manual stainless steel reel, 30m hose	self-rolling stainless steel reel, 20m hose	self-rolling stainless steel reel, 25m hose



Mobile satellite - high pressure

Mobile cleaning and disinfecting unit that can foam, rinse and disinfect with one, simple machine. This unit houses two canisters so you no longer need to waste time on transferring or exchanging products. You can easily set the handle to one of the three options. In addition, the unit enables you to work professionally while using the right concentration. The mobile unit is easy to move, very solid and is so easy to use you couldn't do without it anymore.

description	foam/disinfection cart ST164 + foam lance ST75	foam/disinfection block ST164 + foam lance ST75
article n°	0.9.890.01.000	0.9.891.01.000



SATELLITE CENTRAL SYSTEM

This satellite consists of a stainless steel cupboard with stainless steel control taps (entrance) on top for compressed rinsing water, chemical substances and compressed air. In the bottom of the cupboard, there are stainless steel quick couplers (exit). The cupboard contains the control equipment for the quality of the foam.



	SC110	SC111	SC120	SC121	SC020	SC011
rinse	yes	yes	yes	yes	no	no
foam 1	yes	yes	yes	yes	yes	yes
foam 2	no	no	yes	yes	yes	no
desinfection	no	yes	no	yes	no	yes

SPRAYERS



description
sprayer 1,5 L
article n° 0.9.600.01.000



description
sprayer 7,6 L chapin, ch 2560
article n° 0.9.601.01.000



description
sprayer 9 L cl
article n° 0.9.641.01.000



description
sprayer 5 L black & white
article n° 0.9.671.01.000



description
sprayer 6 L IK MULTI PRO 9
article n° 0.9.042.01.000



description
sprayer 1 L - din 28
article n° 0.9.018.01.000



description
bottle 1 L
article n° 0.9.028.01.000

LANCES

FOAM POTS



description
foam lance 2,8 L
low pressure 2 - 10 bar
article n° 0.9.508.01.000



description
foam lance 1 L
high pressure 40 - 150 bar
12 L/m
article n° 0.9.507.01.000



description
foam lance 2 L
high pressure 60-220 bar
article n° 0.9.506.01.000



description
bottle foam lance 2 L
high pressure
article n° 0.9.535.01.000



description
backpack 5 L
article n° 0.9.552.01.000

LANCES WITHOUT NOZZLE



	stainless steel lance 0,6 m	stainless steel lance 1 m	stainless steel lance 1,5 m	stainless steel lance 2 m
article n°	0.9.543.01.000	0.9.538.01.000	0.9.536.01.000	0.9.537.01.000
max bar	400	400	400	400
max °C	150	150	150	150
insulation	300 mm	400 mm	500 mm	500 mm
length	600 mm	1000 mm	1500 mm	2000 mm
in	1/4" m	1/4" m	1/4" m	1/4" m
out	1/4" f	1/4" f	1/4" f	1/4" f



description
nozzle 25/05
article n° 0.9.811.01.000



description
nozzle 65/08 - thread
article n° 0.9.810.01.000



description
nozzle round jet
article n° 0.9.863.01.000

NOZZLES

LOW / MEDIUM PRESSURE (4 - 25 BAR)



description	yellow disinfection nozzle	blue rinsing nozzle	white foam nozzle	red aimed nozzle
article n°	GES	BLS	WIS	ROS



description	green eco rinsing nozzle	black aimed nozzle
article n°	GRS	10261

HIGH PRESSURE (25 BAR +)



description	stainless steel rinsing nozzle HD	yellow disinfection nozzle	white foam nozzle	stainless steel suspension brace 4 nozzles
article n°	AK6096	GES	WIS	NB4

PISTOLS

LOW PRESSURE (0 - 10 BAR)



description	blue rubber handle	valve medium pressure 1/2" stainless steel
article n°	0.9.532.01.000	KKS
in	nito m-part	1/2" F
out	/	ST3100 F-part protected
max °c	50°C	95°C
max bar	24	60
max L/min	100	40

MEDIUM PRESSURE (15 - 40 BAR)



description	valve medium pressure 1/2" stainless steel	pistol high pressure RL60, 1/2" F x 1/2" F	valve plug 1/2" rubber
article n°	KKS	AK7445	AK7914
in	1/2" F	1/2" F swivel	1/2" F
out	ST3100 F part protected	1/2" F	1/2" F
max °c	95°C	100°C	95°C
max bar	60	65	60
max L/min	40	60	60

HIGH PRESSURE (40 BAR +)



description	valves HP 1/2" stainless steel	high-pressure foam pistol 1/2"	pistol ST2300 with connector	handle ST1100 for stainless steel lance 1,5 m
article n°	KKSHD	AK11682	0.9.524.01.000	0.9.501.01.000
in	1/2" F	1/2" F	3/8" F	3/8" F
out	ST3100 F-part	1/2" F	alto/kew coupling	1/4" F
max °c	80°C	150°C	150°C	150°C
max bar	140	150	310	250
max L/min	60	100	45	30

HOSES

LOW PRESSURE

article n°	LB970117
length	20 m
diameter	12 x 20
coupling	aluminium brass nickel-faced



MEDIUM PRESSURE HOSES MALE X MALE THREAD

PVC article n°	5201	5202	5203	5201-I	5202-I	5203-I
RUBBER article n°	5201-R	5202-R	5203-R	5201-RI	5202-RI	5203-RI
length	20 m	25 m	33,3 m	20 m	25 m	33,3 m
diameter	1/2"	1/2"	1/2"	1/2"	1/2"	1/2"
coupling	steel	steel	steel	stainless steel	stainless steel	stainless steel

MEDIUM PRESSURE HOSES MALE X FEMALE THREAD

PVC article n°	5201-W	5202-W	5201-IW	5202-IW	5203-W	5203-IW
RUBBER article n°	5201-RW	5202-RW	5201-RIW	5202-RIW	5203-RW	5203-RIW
length	20 m	25 m	20 m	25 m	33 m	33 m
diameter	1/2"	1/2"	1/2"	1/2"	1/2"	1/2"
coupling	steel	steel	stainless steel	stainless steel	steel	stainless steel

HIGH PRESSURE HOSES MALE X MALE THREAD

	3/8" (NOT FOR FOAM)			1/2" (FOAM)		
article n°	10524	10642	10551	10588	10589	10591
length	20 m	25 m	30 m	20 m	25 m	33 m
diameter	3/8"	3/8"	3/8"	1/2"	1/2"	1/2"
coupling	steel	steel	steel	steel	steel	steel

HIGH PRESSURE HOSES FOR REELS MALE X FEMALE THREAD

	3/8" (NOT FOR FOAM)		1/2" (FOAM)	
article n°	10524W	10642W	10588W	10589W
length	20 m	25 m	20 m	25 m
diameter	3/8"	3/8"	1/2"	1/2"
coupling	steel	steel	steel	steel

REELS



description	self-rolling stainless steel reel for 20m of hose	self-rolling stainless steel reel for 25m of hose	manual stainless steel reel for 30m of hose
article n°	AS 20	AS 25	MS 30

HOLDERS



holder stainless steel
5 L can

article n° 0.9.020.01.000



can holder 2 x 25 L

BR225



can holder 1 x 25 L

BR125



wall holder for
Meca Clean 4 L

0.9.117.01.000



Canholder 25 L

article n° 0.9.034.01.000

QUICK-RELEASE COUPLINGS



quick-release coupling
kärcher 1/4" M

article n° 0.9.851.01.000



quick-release coupling
kärcher 1/4" F

0.9.849.01.000



quick-release coupling
kärcher 3/8" M

0.9.853.01.000



quick-release coupling
kärcher 3/8" F

0.9.852.01.000



quick-release coupling
nipple alto/kew

article n° 0.9.522.01.000

EXTRA



swivel console for AS20

ZWAS 20



swivel console for AS25

ZWAS 25



BOOSTER UNITS

Booster installations are medium-pressure installations that bring water to a pressure of 20-25 bar. They are installed centrally in a technical area. From these installations, a network of pipes is derived to different tapping points or satellites.

Depending on the number of users, these installations are built with 1 or more small or large pumps. These installations always included an automatic start/stop control and they are protected against dry running and excessive water temperatures. In multi-pump installations, there are never more pumps activated than required for the necessary rate of flow. Booster installations with centrifugal pumps require very little maintenance.

- larger configurations upon demand



	CM1331	CM1529	CM1536	CM11020	CM11022	CM2529	CM2536	CM21020
users	1	2	3	5-6	6-7	4	6	10-11
connection	1"	5/4"	5/4"	2"	2"	2"	2"	2 1/2"
power	3 kW	4 kW	5.5 kW	7.5 kW	7.5 kW	2 x 4 kW	2 x 5.5 kW	2 x 7.5 kW
current	6.3 A	8 A	11.2 A	15.2 A	15.2 A	2 x 8 A	2 x 11.2 A	2 x 15.2 A
weight	65 kg	80 kg	100 kg	120 kg	125 kg	150 kg	190 kg	230 kg
dimensions	500 x 500 x 1200 mm	500 x 500 x 1500 mm	500 x 500 x 1700 mm	600 x 700 x 1500 mm	600 x 700 x 1550 mm	900 x 500 x 1500 mm	900 x 500 x 1700 mm	1100 x 1000 x 1500 mm
tension	3 x 380 V - N+T - 50 Hz (other tensions available upon request)							
supply pressure	2 - 4 bar							

MOTHER UNITS

This mother unit is a complete cleaning system on its own, with an integrated medium-pressure pump, and sometimes also an internal satellite. It is fed with water, electricity and compressed air. Different satellites can be connected to this mother unit via a network of stainless steel pipes. Different versions are possible.

	MU111	MU211
rinse	1	2
foam	1"	5/4"
desinfection	3 kW	4 kW
number of users	1	2 - 3
power consumption	3 kW	4 kW
nominal current	3.65 A	8 A
dimensions	1500 x 580 x 215 mm	1500 x 580 x 215 mm
weight	approx. 80 kg	approx. 120 kg
water supply	5/4"	5/4"
connection	1/4" (5 - 10 bar)	1/4" (5 - 10 bar)
max. water temp.	70°C	70°C
compressed air	approx. 200 L max	approx. 200 L max
working pressure 1 user	21.5 bar (including supply pressure of 2 bar)	
working pressure 2 users	20,2 bar (including supply pressure of 2 bar)	
working pressure 3 users	18,0 bar (including supply pressure of 2 bar)	
tension	3 x 380 V - 50 Hz (other tension values upon request)	



HIGH PRESSURE INSTALLATIONS

High pressure installations are installed centrally in a technical area and they bring water under pressure to 50 - 150 bar. A pipeline network departs from these installations towards the different tapping points or satellites. Depending on the number of users, these installations are built with 1 or more small or large pumps. We always use high-pressure pumps with ceramic plungers of superior quality (CAT, SPECK or Interpump).

Our high pressure installations come with a cascade control with automatic start/stop function. They are protected against dry running and excessive water temperature. As of 2 pumps, we use a stainless steel buffer tank with level control as a physical separator from the water network. Standard, we work with 1 pump per user in order to obtain more reliability and to save energy. For larger volumes (many users) we use larger pumps. Please ask for a custom offer. Installations with lower speed pumps are also possible.

- larger configurations upon request

	HD1	HD2	HD3	HD4
users	1 x 23 L	2 x 23 L	3 x 23 L	4 x 23 L
pressure	100 bar	100 bar	100 bar	100 bar
connection	1/2"	3/4"	1"	1"
power	5.5 kW	2 x 5.5 kW	3 x 5.5 kW	4 x 5.5 kW
current	11.2 A	2 x 11.2 A	3 x 11.2 A	4 x 11.2 A
weight	60 kg	130 kg	190 kg	250 kg
dimensions	800 x 400 x 600 mm	1300 x 1100 x 1100 mm	1800 x 1300 x 1100 mm	1800 x 1300 x 1100 mm
tension	3 x 380 - N+T - 50 Hz (other tension values upon request)			



FOGGERS



Fogging is a method to disinfect areas in which the disinfectant is sprayed very finely creating a kind of mist. The transportation of air guarantees the entire area is treated. The extremely fine droplets (max. 20 micron) make sure all nooks and corners are reached.

Cold foggers

Nebulo is a high-quality cold fogger which is ideal for portable use. This installation has a tank content of 4 L and a fog ejection of approx. 10 m. The size of the drops can be adjusted by means of a knob regulating the rate of flow.

The **Neburotor** has the same characteristics as the Nebulo but a larger reach because of its 360° rotation. In other words: it can be used stationary.

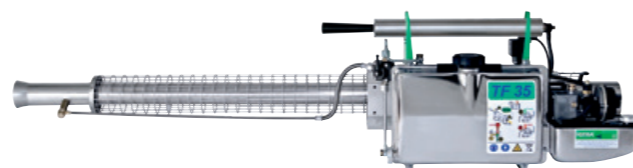
Unipro 5 is the largest type in the range of cold foggers with a tank content of 26 L and a maximum consumption of 18 L / hour. The spray head can be adjusted in height and resists the most aggressive chemical substances. It has an average range of 25 to 40 m. Built on a stainless steel frame on 2 wheels.



	Nebulo	Neburotor	Unipro 5
article n°	Ignebulo/230	Igneburotor/230	475.4406.001
tank content	4 L	4 L	26 L
electricity	230 V / 700 W	230 V / 700 W	230 V / 9,5 A
weight	3,8 kg	3,8 kg	56 kg
consumption	5 - 12 L/hour	5 - 12 L/hour	12 - 20 L/hour
dimensions	400 x 350 mm	400 x 350 mm	590 x 570 x 116 mm

Thermofogger

Portable thermofogger. This installation heats the water combined with the disinfectant up to very high temperatures. The steam that exits the machine (still at 60°C) will create condensation upon contact with the air (cooler) and breaks down in small droplets (3-10 micron). The smaller the drop, the better it penetrates into the pores of all kinds of surfaces. The fogger is driven by a gasoline engine.



	TFW35L
Tank content gasoline	1,2 L
Tank content product	5,7 L
consumption chemical substances	max. 10 L/hour
weight	7,9 kg
starter	4 x 1,5 V battery
dimensions	62 x 70 x 262 cm

Cold foggers - compressed air

Are used for disinfecting areas (cells, barns, greenhouses, corridors, ...). The product is distributed very finely. The drops are microscopically small and float through the area as a fog.



BTS resonator nozzle

article n° 0.9.892.01.000



SHDS

single hatcher disinfection system including 2 magnetic valves and 2 reducing valves

description

article n° 0.9.885.01.000



MHDS

multi hatcher disinfection system

system upon request

Multi hatcher disinfection system



Master unit (Programming)



Control unit (on/off)



BTS Resonator

SOLE CLEANERS



This range of stainless steel sole cleaners AISI-304 consists of a driving compartment and a brush compartment. The driving compartment has 2 engines with step-down gear (1 for each brush). These engines are started when the user passes the sensors. The rotation time for the brushes can be set.

During the process, the brushes are sprayed with water and disinfectant through a magnetic valve. The brush compartment holds 2 large brushes. Each brush consists of a stainless steel axle with different plastic holders for the bristles. Our bristles are not made of PVC but of the higher-quality blue Rilsan. The machine can be cleaned easily, without any further tools. The switchboard contains the control and complete protection (thermal and electro-magnetic)- of 2 engines and is built-in.

	ZW1000	ZW1500	ZW2000
dimensions	1900 x 850 x 1250 mm	2400 x 850 x 1250 mm	2800 x 850 x 1250 mm
bristle length	1000 mm	1500 mm	2000 mm

SIMPLE SOLE CLEANER

This sole cleaner is made of stainless steel and is provided with an injector to add disinfectant to the water supply. Upon activation, the bristles are sprayed with this product. The sole cleaner is activated manually by means of a push button in the handle.

	ZWE
power	0.70 kw
dimensions	450 x 650 x 1200 mm



COMPACT HYGIENE STATION

This hygiene station is used for the controlled passage of employees in and out of the working environment. These machines are made of stainless steel and equipped with horizontal brushes to clean and disinfect both soles at the same time in an easy and efficient way.

The hand disinfection station for the simultaneous disinfection of the hands is integrated into the machine. By inserting both hands at the same time, two sensors activate the disinfection module. Afterwards, the access blockage is released and one person at a time can pass by the carousel. Standard, the machine is equipped with sole cleaning and hand disinfection with access control.

	ZWHDC
power	0.70 kw
bristle length	1000 mm
dimensions	1900 x 1000 x 1800 mm



DOUBLE HYGIENE STATION



The disinfection bath consists of a stainless steel catchpit and a stainless steel walking grid. The liquid level is a few millimetre higher than the walking grid and the level is kept by means of a magnetic valve. While standing in the disinfectant, the hands are disinfected in the hand disinfection station. In the second part of the disinfection bath the grid is somewhat raised in order to be higher than the disinfectant. This is the dripping zone. The walking grid can be removed for a simple and thorough cleaning.

Upon returning from the production zone, a sole cleaner is used in combination with a carousel. This unit is available with 1000 mm or 1500 mm bristle. Entrance of the production zone: disinfection bath with hand disinfection station and carousel. Exit of production zone: sole cleaner with carousel.

- option: this passage can be provided with brushes on both sides instead of a disinfection bath

	DZW1000	DZW1500	2DZW1000	2DZW1500
power	0.70 kw	0.70 kw	0.70 kw	0.70 kw
supply	3 x 400 V	3 x 400 V	3 x 400 V	3 x 400 V
bristle length	2 x 1000 mm	2 x 1500 mm	4 x 1000 mm	4 x 1500 mm
dimensions	1900 x 1800 x 1250 mm	2400 x 1800 x 1250 mm	1900 x 1800 x 1250 mm	2400 x 1800 x 1250 mm



BOOT CLEANER

This solid stainless steel construction guarantees a thorough cleaning of boots with a minimal power consumption. The boot cleaner can be used in combination with a sole cleaner or autonomously. The functional construction guarantees a quick and thorough cleaning of boots with a minimal power consumption. The rotating brushes are started by means of a sensor. Disinfectants are automatically added by means of a venturi spraying the solution onto the brushes. The machine is built entirely out of stainless steel in accordance with EC standards and complies with the highest quality requirements. The unit is delivered ready for use, except for the draining accessories.

- option: this passage can be provided with brushes on both sides instead of a disinfection bath



	LWA	LW
power	0.70 kw	0.70 kw
dimensions	700 x 585 x 1300 mm	700 x 585 x 1300 mm
brush diameter	260 mm	260 mm
brush length	310 mm	310 mm

BOOT DISINFECTION



description	small disinfection mat 600 x 900 mm	large disinfection mat 1800 x 900 mm	disinfection basin 600 x 400 x 150 mm
article n°	0.9.209.01.000	0.9.212.01.000	0.9.349.01.000



HAND DISINFECTION STATION

Both hands are inserted into the station. The console contains 2 sensors and 4 spray nozzles. Both hands are detected. After activation by the sensors, both hands are sprayed (top and bottom) with alcohol-based disinfectant. If this is done correctly, 1 of the LED lamps will be activated and the carousel will be unlocked. This lasts for about one second, and guarantees perfect access control.

- mounted on foot upon request
- the hand disinfection station is available in 2 versions, with or without carousel
- this unit has a stainless steel cupboard in which the drive train is situated for the carousel, the stainless steel console to detect and spray hands, the steering cupboard and the pump



	HDT	HDC
power	0.30 kw	0.30 kw
carousel	no	yes
dimensions	440 x 570 x 300 mm	444 x 1100 x 800 mm

WASHBASIN / WASH GUTTERS

The stainless steel washbasins are very strong and solid. They have been glass-shot blasted for a smooth surface and the rounded edges guarantee optimal hygiene. The taps are sensor-controlled. The high-quality materials guarantee a long lifespan and reliability.



- the wash gutters are available with 2 to 5 taps
- option: all wash gutters are available on foot (price upon request)

	HW1	HW2	HW3	HW4	HW5
number of taps	1	2	3	4	5
power source	230 V	230 V	230 V	230 V	230 V
dimensions	500 x 525 x 450 mm	1000 x 525 x 450 mm	1500 x 525 x 450 mm	2000 x 525 x 450 mm	2500 x 525 x 450 mm

DISPENSERS



description hand soap dispenser 1,20 L - PVC
 article n° 0.9.123.01.000



description hand soap dispenser 1 L - stainless steel ophardt
 article n° 0.9.100.01.000



description hand soap dispenser LCP-T 1 L
 article n° 0.9.137.01.000



description soap dispenser 1 L
 article n° HS1000K



description cover for hand soap dispenser stainless steel 1 L
 article n° 0.9.861.01.000



description cover for hand soap dispenser LCP-T 1 L
 article n° 0.9.860.01.000



description bottle for hand soap dispenser, 1 L - ophardt
 article n° 0.9.124.01.000



description stainless steel paper basket 40 L
 article n° AFK40
 dimensions 380 x 250 x 450 mm



description hair net dispenser
 article n° 3651
 dimensions 400 x 180 x 560 mm



description universal dispenser
 article n° 3032
 dimensions 300 x 280 x 145 mm



description stainless steel paper roll dispenser
 article n° 4297
 dimensions 280 x 250 x 400 mm



description dispenser for Mint Cream 2,5 L
 article n° 0.9.872.01.000

SIPHON PUMPS



description pump hovi 30 ml - 25 L
 article n° 0.9.004.01.000



description pump eng 30 ml - 25L/60L din 61
 article n° 0.9.006.01.000



description pump 25L/60L major, 100ml
 article n° 0.9.016.01.000



description pump 5L - 5ml
 article n° 0.9.007.01.000



description pump barrel 210 L major, 100ml
 article n° 0.9.133.01.000



description pump barrel 210 L ezi-action
 article n° 0.9.139.01.000



description pump 2 ml Kenotest - din 28
 article n° S00315



description pump continental 1L cubic - 3ml
 article n° 0.9.046.01.000



description pump meca 4 L RS4 + cover
 article n° 0.9.131.01.000



description pump meca inox 4L metal cover
 article n° 0.9.107.01.000



description pump barrel red siphon
 article n° 0.9.027.01.000



description siphon pump yellow polypropylene
 article n° 0.9.865.01.000



description pump 5L - HOVI (30ml)
 article n° 0.9.040.01.000

DOSATRON

The dosatron is connected to the water distribution network and uses the water pressure as sole driving force for the motor piston. It drives a dosage piston that aspirates the concentrate at the set percentage and mixes it with the water. The solution is then distributed via the pipeline network.

• other types and flow rates upon request

TECHNICAL INFO	
flow rate	min 10 L/h - max 2500 L/h
working pressure	0,3 - 4 bar
water temperature	min. 5°C - max 40°C
dosage	0,2 - 2,0 % (type D25RE2)
	1,0 - 5,0 % (type D25RE5)
	3,0 - 10,0 % (type D25RE10)
connection	3/4" M
pressure loss	0,3 - 1,9 bar
maximum aspiration	4 m

article n°	type	dosage
ALKALINE CONCENTRATES		
0.9.400.01.000	D25RE2AF	0,2 - 2,0 %
0.9.401.01.000	D25RE5AF	1,0 - 5,0 %
0.9.402.01.000	D25RE10AF	3,0 - 10,0 %

ALKALINE CORROSIVE CONCENTRATES (EXTERNAL INJECTION)		
0.9.403.01.000	D25RE2IEAF	0,2 - 2,0 %
0.9.404.01.000	D25RE5IEAF	1,0 - 5,0 %
0.9.405.01.000	D25RE10IEAF	3,0 - 10,0 %

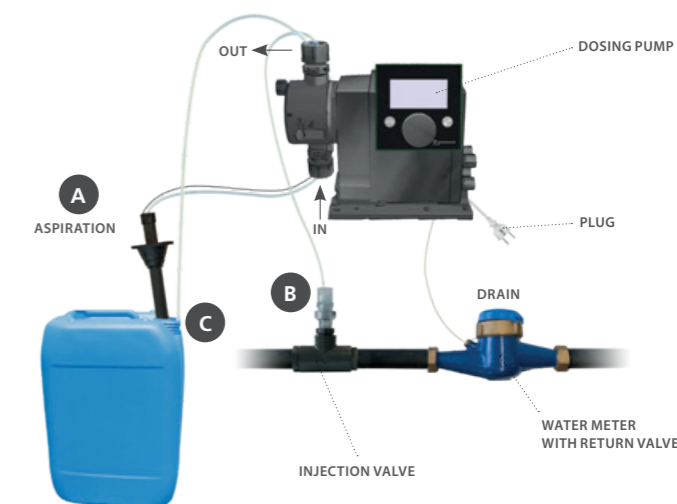
ACID CONCENTRATES		
0.9.431.01.000	D25RE2VF	0,2 - 2,0 %
0.9.411.01.000	D25RE5VF	1,0 - 5,0 %

ACID CORROSIVE CONCENTRATES (EXTERNAL INJECTION)		
0.9.406.01.000	D25RE2IEVF	0,2 - 2,0 %
0.9.407.01.000	D25RE5IEVF	1,0 - 5,0 %
0.9.408.01.000	D25RE10IEVF	3,0 - 10,0 %



DOSING PUMP

description	dosing pump CIDDOS AP6
article n°	0.9.965.01.000



PROMAX

Dosing systems for filling buckets or bottles.



	Promax for buckets	Promax for bottles
article n°	PXB1F16S0000	PXB1F04S0000
rate of flow detergent	16 L/m	4 L/m
working pressure	1 - 9 bar (ideally: 2 - 4 bar)	1 - 9 bar (ideally: 2 - 4 bar)
temperature	max. 70°C	max. 70°C
dimensions	220 x 100 x 120 mm	220 x 100 x 120 mm
activation system	knob	sliding switch

ACCESSORIES DOSATRON



description	filter dsa 350 micron	pressure reducer 3/4" V	flow rate reducer M/F 41/ min 3/4", brass	BA return valve 3/4 M x FT
article n°	0.9.019.01.000	8.9.231.01.000	8.9.232.01.000	8.9.233.01.000

PERISTALTIC PUMPS

Seko PR 1 is a peristaltic rinsing agent pump for small dishwashers in a speed-controlled version. The rate of flow is controlled by a potentiometer.

Seko PR4 is a detergent pump for small dishwashers in a speed-controlled version. The rate of flow is controlled by a potentiometer.

Twindose 10 is an automatic dosing pump for detergent and rinsing agent. This pump is suitable for covered dishwashers. Thanks to its 6 different working modes, **Saier MCS 2105 concept** is a multifunctional dosing pump. It can be used as a time-controlled pump and can be controlled inductively. Thanks to its rotors, the pump hoses can be replaced easily and quickly.

Saier MCD 2117 concept is a high-quality dosing unit on conductivity with an integrated hose pump for measuring the quantity of detergent in (tunnel) dishwashers. The Concept 2117 has a display showing conductivity, current conductivity in %, temperature and time. The pre- and after-dosing can be set between 1.5 and 20 minutes.

Saier DSP 9805-II is a hose pump which is controlled by a microprocessor and which doses liquids. With a rate of flow of 50 litres per hour, this pump is suitable for larger dishwashers (crate washers). The conductivity is measured by means of a conductive or inductive sensor. It is possible to connect an additional pump (Saier DSP 9612) to dose anti-foaming or rinsing agent.

Saier DSP 9612 is a hose pump for applications without counterpressure. This pump has a rate of flow of 50 litres per hour. This pump is mainly used as an add-on for the Saier DSP 9805 for dosing anti-foaming or rinsing agent.



	Seko PR1	Seko PR4	Twindose 10
article n°	0.9.138.01.000	0.9.116.01.000	GTR04R01Y2002
tension	230 V - 50 Hz	230 V - 50 Hz	24 - 115 - 230 V
rate of flow detergent	0,2 - 1,0 L/h	0,6 - 4,0 L/h	1 - 7 L/h
rate of flow rinsing agent	/	/	0.18 - 1 L/h
pressure	max 3 bar	max 3 bar	max. 3 bar
power	3.5 W	3.5 W	8 W
dimensions	103 x 82 x 92 mm	103 x 82 x 92 mm	195 x 168 x 110 mm



	Saier MCD 2117 concept	Saier MCS 2105 concept	Saier DSP 9805-II	Saier DSP 9612
article n°	8.9.400.01.000	8.9.403.01.000	8.9.401.01.000	8.9.402.01.000
tension	230 VAC (± 10%)	200 - 240 V (± 10%)	230 VAC (± 10%)	230 V (± 10%)
rate of flow detergent	9 L/h	9 L/h	50 L/h	50 L/h
pressure	2 bar	2 bar	0,5 bar	0.5 bar
power	20 W	16 W	30 W	25 W
dimensions	92 x 170 x 130 mm	92 x 170 x 130 mm	310 x 190 x 92 mm	175 x 145 x 85 mm

ASSEMBLY



description	hose pump 2117 MCD + dishwasher 1 L + lamp	hose pump 2105 MCS + dishwasher 1L + lamp	hose pump DSP 9805-II 833 ml/min + lamp	hose pump DSP 9612 833 ml/min 24 v + box
article n°	8.9.430.01.000	8.9.433.01.000	8.9.431.01.000	8.9.432.01.000

LAUNDRY

These automatic dosing systems are used to provide washing machines with the required product. With 4 or 5 hose pumps it gives your machine the right dose of product at the right time.



	4 x 18 L	5 x 18 L	4 x 24 L	5 x 24 L
description	4 pump system smart P plus	5 pump system smart P plus	4 pump system smart S plus	5 pump system smart S plus
article n°	8.9.191.01.000	8.9.194.01.000	8.9.192.01.000	8.9.201.01.000
number of pumps	4	5	4	5
flow	18 L/H	18L/H	24L/H	24L/H
tension	230V	230V	230V	230V

NECESSITIES



description	mounting plate PVC with pre-drilled holes	levelcontroller for a maximum of 10 products	inlet manifold 4 x diameter 10	inlet manifold 6 x diameter 10
article n°	8.9.203.01.010	8.9.193.01.000	8.9.195.01.000	8.9.178.01.000



description	suction pipe with empty indication 25L diameter 10	male plug 230V rubber	reinforced hose 10 x 16
article n°	8.9.158.01.000	AL1439190	AK5514

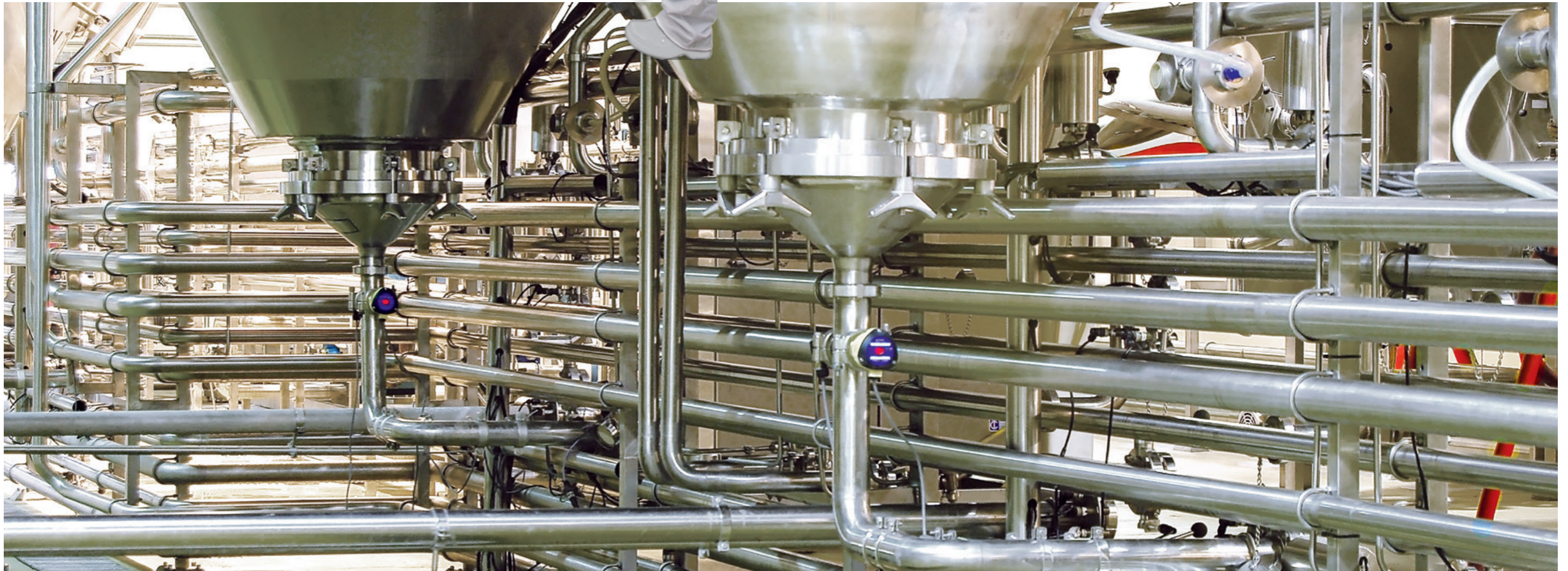


CIP PROJECT

CIP Cleaning is a (semi) automatic cleaning process that is used frequently in the food and drinks industry. A CIP installation guarantees a fast, efficient and constant cleaning and disinfection result with limited manual intervention.

CID LINES can provide the CIP dosing installation as well as guidance in creating new innovative equipment as well as optimizing existing CIP installations.

- project upon request



CLAW BATH



description black foot basin
2100 x 750 x 200 mm
article n° 0.9.631.01.000



CLOTHS



description udder cloths yellow
25 pcs (chicoppee)
article n° 0.9.308.25.000



description microfiber cloth blue
25 pcs
article n° 0.9.038.01.000



description pre-milking paper 40 pcs
(per 2 rolls of 1000 sheets)
article n° 0.9.313.01.000



description dispenser for pre-milking
paper
article n° 0.9.033.01.000

DIPPING CUPS



description dipping cup flat
article n° 0.9.301.01.000



description dipping cup double
aspiration
article n° 0.9.319.01.000



description dipping cup return
article n° 0.9.302.01.000



description dipping cup no return
article n° 0.9.303.01.000



description foam cup
article n° 0.9.312.01.000



description udder hygiene spray
article n° 0.9.304.01.000



description tank for dipping cups
article n° 0.9.314.01.000

PURE FOAMER

The ideal tool for an effective pre-treatment, a system that optimizes the milking process and makes pre-milking easier than ever! The Pure Foamer is simple, economic, reliable, powerful and effective.

Increases working comfort during milking, it is no longer necessary to pinch the foam cup; all you need to do is push the lever. Easy and quickly to install and to use. Considerably reduces milking times. No compressor required, works on vacuum milking machine.

- 1 year guarantee
- can be adjusted to all sorts of milking stables: swing-over, parallel, fishbone and carousel

	farm model	shop model	van model	truck model
description	pure foamer	pure foamer 220 V with sink	pure foamer 12 V	pure foamer 24 V
article n°	0.9.399.01.000	0.9.451.01.000	0.9.452.01.000	0.9.453.01.000



PURE DIPPER

description pure dipper
article n° 0.9.553.01.000



SPRAYER KIT

description sprayer kit
article n° 0.9.554.01.000



SPARE PARTS

description	gun body (vs26b) for pure foamer/dipper	foamer head (fo27) - pure foamer	dipper head (dp27) - pure dipper	spray head (vs27bf)
article n°	0.9.456.01.000	0.9.457.01.000	0.9.459.01.000	0.9.458.01.000
description	spray pump kit	service kit pump (sup22: sup2 + sup9)	service kit gun (vs32)	
article n°	0.9.465.01.000	0.9.466.01.000	0.9.467.01.000	

CLOTHS AND HANDLES



description extra micro fiber cloth 12 pcs

article n° 0.9.322.01.000



description telescopic handle 2 x 1,5 m alu 402

article n° 0.9.604.01.000



description telescopic handle 2 x 1,5m bi-pro

article n° 0.9.627.01.000

BROOMS



description broom 25 cm - polyester

article n° 0.9.602.01.000



description broom 35 cm - polyester

article n° 0.9.617.01.000



description broom 25 cm for trucks bi-pro

article n° 0.9.626.01.000



description broom 33 cm for trucks bi-pro

article n° 0.9.632.01.000



description hand brush polyester short handle

article n° 0.9.603.01.000



description tank brush halfround

article n° 0.9.619.01.000

EXTRA



description carwash suction pads 100 pcs

article n° 0.9.665.01.000



description wiper cover Kenotek 1000 pcs

article n° 0.9.323.01.000

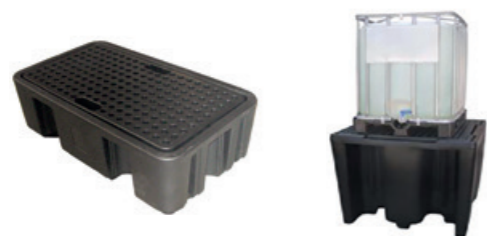


description Kenotek aftercare bag 12 pcs

article n° 0.9.879.01.000



COLLECTION TRAYS



description	collection tray plastic small 1300 x 750 x 400 mm	tray for IBC
article n°	0.9.639.01.000	0.9.656.01.000

BOTTLE ACCESSORIES



description	adapter 200 L barrel - orange	adapter barrel 2 inch blue	adapter 1000 L container	tap 25 L can - din 61
article n°	0.9.009.01.000	0.9.025.01.000	0.9.010.01.000	0.9.001.01.000



description	drain 25 L can	tap barrel - 2 inch	key - din 61	key barrel 200 L
article n°	0.9.014.01.000	0.9.002.01.000	0.9.015.01.000	0.9.026.01.000



TESTERS



description dish Kenotest
article n° 0.9.318.01.000



description test strips Cid Clean
article n° 0.9.700.01.000



description test strips peracetic acid
5 - 50 mg/L
article n° 0.9.715.01.000



description test strips peracetic acid
500 - 2000 mg/L
article n° 0.9.720.01.000



description test strips peracetic acid
100 - 500 mg/L
article n° 0.9.717.01.000



description test strips hardness
article n° 0.9.709.01.000



description test strips chlorine dioxide
article n° 0.9.721.01.000



description test strips Virocid / Cid 210
article n° 0.9.701.01.000



description test strips Cid 20 / Eco Des
article n° 0.9.702.01.000



description pH indicator
article n° 0.9.705.01.000



description chlorine tester
article n° 0.9.706.01.000



description test strips Pro Clean
100 - 25 pcs
article n° 8.9.228.01.000



description titration kit
article n° 0.9.704.01.000

MEASURING CUPS



description measuring cup 1 L
article n° 0.9.013.01.000



description measuring cylinder 1 L
article n° 0.9.022.01.000

METERS



description conductivity meter
article n° 0.9.708.01.000



description pH indicator (electronic)
article n° 0.9.707.01.000



description Kenocell scan
somatic cells analyzer
article n° 0.9.329.01.000





CID LINES[®]

Waterpoortstraat 2 • 8900 Ieper - Belgium • T +32 57 21 78 77 • F +32 57 21 78 79 • info@cidlines.com • www.cidlines.com