



Product protocol

KenotestTM



STEP 1
Rinse the plate with water before use.



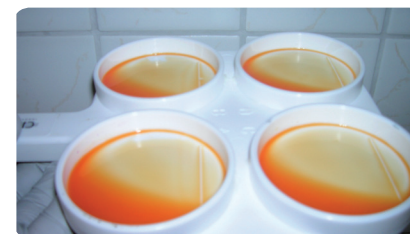
STEP 2
Put in each cup of the testplate milk of the corresponding teat.



STEP 3
Pour the excess of milk away by turning the testplate until the milk reaches the marks on the testplate.



STEP 4
Add to each cup 2 ml Kenotest, and mix the solution during 10 seconds.



STEP 5
Compare the colour and the viscosity of the solution with the table.








Product protocol

KenotestTM



INTERPRETATION TABLE

CMT	interpretation	CCI (cells 1000ml)	
-	liquid mixture without gel	0 - 200	
suspicious infection			
traces	light gel visible by transparence will disappear after 10 sec.	150 - 500	
1	visible light gel by transparence, persistent	400 - 1000	
long lasting infection			
2	visible gel, visquous filament adhesion to the cup	800 - 5000	
3	strong gel like the white of egg	> 5000	

MATERIAL

- testplate
- KenotestTM

