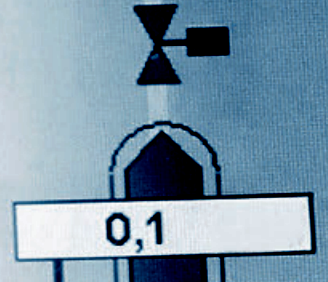


# CID LINES®

## EQUIPMENT CATALOGUE

Professional equipment to make hygiene work



WE  
MAKE  
HYGIENE  
WORK

**CID LINES** manufactures and supplies a very wide range of sophisticated cleaning, care and disinfection aids for the transportation, food and agricultural sector. In our professional laboratories, specialised chemists and engineers continuously try to improve our products, keeping in mind your specific hygiene needs. While doing so, they apply the strictest quality control standards, such as: ISO 9001:2000 and GMP Pharma-certified production methods.

Since its foundation in 1988, **CID LINES** has shown exponential growth and the company has opened subsidiaries in France, Poland and Spain. **CID LINES** exports its products to more than 90 countries worldwide. This worldwide recognition guarantees our quality and yield.

In order to be able to guarantee an optimal quality of our products when applying them, we have added a complete material and service department to our enterprise. This catalogue gives you a global overview of the materials we have to offer. This department also helps you with the installation and maintenance of your equipment.

# CONTENT

---

	<b>Spraying and foaming</b>	<b>4</b>
	<b>Sprays and foams: accessories</b>	<b>10</b>
	<b>Pressurization systems</b>	<b>14</b>
	<b>Area disinfection: fogging</b>	<b>16</b>
	<b>Personal hygiene</b>	<b>18</b>
	<b>Dispensers</b>	<b>22</b>
	<b>Dosing systems</b>	<b>24</b>
	<b>CIP (cleaning in place)</b>	<b>28</b>
	<b>Animal hygiene</b>	<b>30</b>
	<b>Carwash</b>	<b>32</b>
	<b>Accessories packaging</b>	<b>34</b>
	<b>Measuring instruments</b>	<b>36</b>



CID LINES

TECHNICAL CUSTOMER SUPPORT

CID LINES

Member: Blue Bird  
"BEST" modern  
vehicle

CID LINES reserves the right to amend products without prior notification. The products listed may not all be available in each country. For more information, please contact your CID LINES representative. Additional product information can be supplied on request via [info@cidlines.com](mailto:info@cidlines.com).



## LOW-PRESSURE INSTALLATIONS



### Pro Wash

Designed to clean and disinfect floors and surfaces in the food industry and the institutional sector, retail and health care.

- supplied with 1 holder for 2 x 5 litre bottles + BA separator
- 2 products: for cleaning, rinsing and disinfecting

	Pro Wash
article n°	CEP200HA0000000
operating temperature:	60°C Max
working pressure	0,5 - 5 bar
mixing ratio	0,50% - 10,90%



### Satellite

Satellite to be connected to the water distribution system to rinse and remove foam or to rinse and disinfect. This satellite is provided with water under low pressure and compressed air.

	SL111A	SL111Z	SL111AZ
description	LD satellite with compressed air (alkaline)	LD satellite with compressed air (acid: viton)	LD satellite with compressed air (alkaline + acid: kalrez)

## MIDDLE AND HIGH PRESSURE SATELLITE

Standard satellite for rinsing, foaming and disinfecting. This satellite is provided with water under pressure and compressed air and can be connected to any mother unit or pressure increasing network. Different versions are possible. This satellite can also be mounted on a mobile frame with or without reel.

- these satellites are delivered with a lock so they cannot be disadjusted by unauthorized persons.
- standard satellites, others are available upon request.



	SM111	SH111	SHH111
rinsing	yes	yes	yes
foaming	yes	yes	yes
disinfection	yes	yes	yes
pressure	15 - 40 bar	40 - 100 bar	100-150 bar
water connection	3/4"	3/4"	3/4"
connection compressed air	1/4"	1/4"	1/4"
water consumption when foaming/fogging	10 L	10 L	10 L
water consumption when rinsing	30/40 L	30/40 L	30/40 L
compressed air consumption	ca. 200 L/min	ca. 200 L/min	ca. 200 L/min
dimensions	400 x 350 x 200 mm	400 x 350 x 200 mm	400 x 350 x 200 mm
weight	ca. 20 kg	ca. 20 kg	ca. 20 kg

# MOBILE SATELLITE

## Mobile satellite - middle or high pressure with compressed air

This mobile cleaning system offers a solution when it is not possible to install a fixed cleaning system throughout the company or when only a limited number of people is responsible for cleaning.

The traditional satellite is mounted on a solid stainless steel frame. This frame has 2 fixed and 2 castor wheels. It can rinse, foam and disinfect. The unit must be provided with water under increasing pressure and compressed air.

	MSM111	MSH111	MSHH111
description	mobile medium pressure satellite	mobile high pressure satellite	mobile high pressure satellite
pressure	15 - 40 bar	40 - 100 bar	100 - 150 bar

### OPTIONS

	MSM111 MS30	MSM111 AS20	MSM111 AS25
description	manual stainless steel reel, 30m hose	self-rolling stainless steel reel, 20m hose	self-rolling stainless steel reel, 25m hose



## Mobile satellite - high pressure

Mobile cleaning and disinfecting unit that can foam, rinse and disinfect with one, simple machine. This unit houses two canisters so you no longer need to waste time on transferring or exchanging products. You can easily set the handle to one of the three options. In addition, the unit enables you to work professionally while using the right concentration. The mobile unit is easy to move, very solid and is so easy to use you couldn't do without it anymore.

description	foam/disinfection cart ST164 + foam lance ST75	foam/disinfection block ST164 + foam lance ST75
article n°	0.9.890.01.000	0.9.891.01.000





# FOAM AND FOG BARRELS

## FOAM BARRELS - PLASTICS

This plastic foam barrel has a content of 38 L or 95 L. A large inspection hole makes sure the barrel can easily be filled with water, combined with the right amount of foaming product. An external compressed air-controlled membrane pump (installed in the back) guarantees the perfect foam. This method avoids pressurizing the unit itself and is extremely safe. The foam barrel must be provided with compressed air (3 - 5 bar). This unit is delivered with a 9 m foam hose with lance.



	FI10NE	FI25NE
description	foam barrel PVC - EPDM	foam barrel PVC - EPDM
content	approx. 38 L	approx. 95 L
length foam hose	6 m	9 m
foam distance	4,6 m - 6 m	7 m - 9 m
working pressure	3 - 5 bar	3 - 5 bar
compressed air consumption	141 - 226 L/m	141 - 283 L/m
max. water temp.	37°C	37°C
weight (empty)	approx. 18 kg	approx. 25 kg
dimensions	483 x 406 x 1041 mm	609 x 533 x 889 mm

## FOAM BARRELS - STAINLESS STEEL AND METAL



description	foam and spray barrel 24 L stainless steel	foam and spray barrel 50 L stainless steel
article n°	0.9.613.01.000	0.9.614.01.000





## SATELLITE CENTRAL SYSTEM

This satellite consists of a stainless steel cupboard with stainless steel control taps (entrance) on top for compressed rinsing water, chemical substances and compressed air. In the bottom of the cupboard, there are stainless steel quick couplers (exit). The cupboard contains the control equipment for the quality of the foam.



	SC110	SC111	SC120	SC121	SC020	SC011
rinse	yes	yes	yes	yes	no	no
foam 1	yes	yes	yes	yes	yes	yes
foam 2	no	no	yes	yes	yes	no
desinfection	no	yes	no	yes	no	yes

## SPRAYERS



sprayer 1,5 L

0.9.600.01.000



sprayer 7,6 L chapin, ch 2560

0.9.601.01.000



sprayer 9 L cl

0.9.641.01.000



sprayer 5 L black &amp; white

0.9.671.01.000



sprayer 6 L IK MULTI PRO 9

0.9.042.01.000



sprayer 1 L - din 28

0.9.018.01.000



bottle 1 L

0.9.028.01.000



# LANCES

## FOAM POTS



foam lance 2,8 L  
low pressure 2 - 10 bar



foam lance 1 L  
high pressure 40 - 150 bar  
12 L/m



foam lance 2 L  
high pressure 60-220 bar



bottle foam lance 2 L  
high pressure

description

article n°

0.9.508.01.000

0.9.507.01.000

0.9.506.01.000

0.9.535.01.000



description

backpack 5 L

article n°

0.9.552.01.000

## LANCES WITHOUT NOZZLE



	stainless steel lance 0,6 m	stainless steel lance 1 m	stainless steel lance 1,5 m	stainless steel lance 2 m
article n°	0.9.543.01.000	0.9.538.01.000	0.9.536.01.000	0.9.537.01.000
max bar	400	400	400	400
max °C	150	150	150	150
insulation	300 mm	400 mm	500 mm	500 mm
length	600 mm	1000 mm	1500 mm	2000 mm
in	1/4" m	1/4" m	1/4" m	1/4" m
out	1/4" f	1/4" f	1/4" f	1/4" f



nozzle 25/05

article n° 0.9.811.01.000



nozzle 65/08 - thread

article n° 0.9.810.01.000



nozzle round jet

article n° 0.9.863.01.000

description

article n°



# NOZZLES

## LOW / MEDIUM PRESSURE (4 - 25 BAR)



yellow disinfection nozzle

GES



blue rinsing nozzle

BLS



white foam nozzle

WIS



red aimed nozzle

ROS



green eco rinsing nozzle

GRS



black aimed nozzle

10261

## HIGH PRESSURE (25 BAR +)



stainless steel  
rinsing nozzle HD

AK6096



yellow disinfection nozzle

GES



white foam nozzle

WIS



stainless steel suspension  
brace 4 nozzles

NB4

# PISTOLS

## LOW PRESSURE (0 - 10 BAR)



description	blue rubber handle	valve medium pressure 1/2" stainless steel
article n°	0.9.532.01.000	KKS
in	nito m-part	1/2" F
out	/	ST3100 F-part protected
max °c	50°C	95°C
max bar	24	60
max L/min	100	40

## MEDIUM PRESSURE (15 - 40 BAR)



description	valve medium pressure 1/2" stainless steel	pistol high pressure RL60, 1/2" F x 1/2" F	valve plug 1/2" rubber
article n°	KKS	AK7445	AK7914
in	1/2" F	1/2" F swivel	1/2" F
out	ST3100 F part protected	1/2" F	1/2" F
max °c	95°C	100°C	95°C
max bar	60	65	60
max L/min	40	60	60

## HIGH PRESSURE (40 BAR +)



description	valves HP 1/2" stainless steel	high-pressure foam pistol 1/2"	pistol ST2300 with connector	handle ST1100 for stainless steel lance 1,5 m
article n°	KKSHD	AK11682	0.9.524.01.000	0.9.501.01.000
in	1/2" F	1/2" F	3/8" F	3/8" F
out	ST3100 F-part	1/2" F	alto/kew coupling	1/4" F
max °c	80°C	150°C	150°C	150°C
max bar	140	150	310	250
max L/min	60	100	45	30



## HOSES

### LOW PRESSURE

article n°	LB970117
length	20 m
diameter	12 x 20
coupling	aluminium brass nickel-faced



### MEDIUM PRESSURE HOSES MALE X MALE THREAD

PVC article n°	5201	5202	5203	5201-I	5202-I	5203-I
RUBBER article n°	5201-R	5202-R	5203-R	5201-RI	5202-RI	5203-RI
length	20 m	25 m	33,3 m	20 m	25 m	33,3 m
diameter	1/2"	1/2"	1/2"	1/2"	1/2"	1/2"
coupling	steel	steel	steel	stainless steel	stainless steel	stainless steel

### MEDIUM PRESSURE HOSES MALE X FEMALE THREAD

PVC article n°	5201-W	5202-W	5201-IW	5202-IW
RUBBER article n°	5201-RW	5202-RW	5201-RIW	5202-RIW
length	20 m	25 m	20 m	25 m
diameter	1/2"	1/2"	1/2"	1/2"
coupling	steel	steel	stainless steel	stainless steel

### HIGH PRESSURE HOSES MALE X MALE THREAD

	3/8" (NOT FOR FOAM)			1/2" (FOAM)		
article n°	10524	10642	10551	10588	10589	10591
length	20 m	25 m	30 m	20 m	25 m	33 m
diameter	3/8"	3/8"	3/8"	1/2"	1/2"	1/2"
coupling	steel	steel	steel	steel	steel	steel

### HIGH PRESSURE HOSES FOR REELS MALE X FEMALE THREAD

	3/8" (NOT FOR FOAM)		1/2" (FOAM)	
article n°	10524W	10642W	10588W	10589W
length	20 m	25 m	20 m	25 m
diameter	3/8"	3/8"	1/2"	1/2"
coupling	steel	steel	steel	steel

## REELS



description	self-rolling stainless steel reel for 20m of hose	self-rolling stainless steel reel for 25m of hose	manual stainless steel reel for 30m of hose
article n°	AS 20	AS 25	MS 30

## HOLDERS



holder stainless steel  
5 L can



holder stainless steel  
2 x 5 L can



can holder 2 x 25 L



can holder 1 x 25 L

description

article n°

0.9.020.01.000

0.9.030.01.000

BR225

BR125



wall holder for  
Meca Clean 4 L



Canholder 25 L

description

article n°

0.9.117.01.000

0.9.034.01.000

## QUICK-RELEASE COUPLINGS



quick-release coupling  
karcher 1/4" M



quick-release coupling  
karcher 1/4" F



quick-release coupling  
karcher 3/8" M



quick-release coupling  
karcher 3/8" F

description

article n°

0.9.851.01.000

0.9.849.01.000

0.9.853.01.000

0.9.852.01.000



quick-release coupling  
nipple alto/kew

description

article n°

0.9.522.01.000

## EXTRA



swivel console for AS20



swivel console for AS25

description

article n°

ZWAS 20

ZWAS 25



## BOOSTER UNITS

Booster installations are medium-pressure installations that bring water to a pressure of 20-25 bar. They are installed centrally in a technical area. From these installations, a network of pipes is derived to different tapping points or satellites.

Depending on the number of users, these installations are built with 1 or more small or large pumps. These installations always included an automatic start/stop control and they are protected against dry running and excessive water temperatures. In multi-pump installations, there are never more pumps activated than required for the necessary rate of flow. Booster installations with centrifugal pumps require very little maintenance.

- larger configurations upon demand



	CM1331	CM1529	CM1536	CM11020	CM11022	CM2529	CM2536	CM21020
users	1	2	3	5-6	6-7	4	6	10-11
connection	1"	5/4"	5/4"	2"	2"	2"	2"	2 1/2"
power	3 kW	4 kW	5.5 kW	7.5 kW	7.5 kW	2 x 4 kW	2 x 5.5 kW	2 x 7.5 kW
current	6.3 A	8 A	11.2 A	15.2 A	15.2 A	2 x 8 A	2 x 11.2 A	2 x 15.2 A
weight	65 kg	80 kg	100 kg	120 kg	125 kg	150 kg	190 kg	230 kg
dimensions	500 x 500 x 1200 mm	500 x 500 x 1500 mm	500 x 500 x 1700 mm	600 x 700 x 1500 mm	600 x 700 x 1550 mm	900 x 500 x 1500 mm	900 x 500 x 1700 mm	1100 x 1000 x 1500 mm
tension	3 x 380 V - N+T - 50 Hz (other tensions available upon request)							
supply pressure	2 - 4 bar							



## MOTHER UNITS

This mother unit is a complete cleaning system on its own, with an integrated medium-pressure pump, and sometimes also an internal satellite. It is fed with water, electricity and compressed air. Different satellites can be connected to this mother unit via a network of stainless steel pipes. Different versions are possible.

	MU111	MU211
rinse	1	2
foam	1"	5/4"
desinfection	3 kW	4 kW
number of users	1	2 - 3
power consumption	3 kW	4 kW
nominal current	3.65 A	8 A
dimensions	1500 x 580 x 215 mm	1500 x 580 x 215 mm
weight	approx. 80 kg	approx. 120 kg
water supply	5/4"	5/4"
connection	1/4" (5 - 10 bar)	1/4" (5 - 10 bar)
max. water temp.	70°C	70°C
compressed air	approx. 200 L max	approx. 200 L max
working pressure 1 user	21.5 bar (including supply pressure of 2 bar)	
working pressure 2 users	20,2 bar (including supply pressure of 2 bar)	
working pressure 3 users	18,0 bar (including supply pressure of 2 bar)	
tension	3 x 380 V – 50 Hz (other tension values upon request)	



# HIGH PRESSURE INSTALLATIONS

High pressure installations are installed centrally in a technical area and they bring water under pressure to 50 - 150 bar. A pipeline network departs from these installations towards the different tapping points or satellites. Depending on the number of users, these installations are built with 1 or more small or large pumps. We always use high-pressure pumps with ceramic plungers of superior quality (CAT, SPECK or Interpump).

Our high pressure installations come with a cascade control with automatic start/stop function. They are protected against dry running and excessive water temperature. As of 2 pumps, we use a stainless steel buffer tank with level control as a physical separator from the water network. Standard, we work with 1 pump per user in order to obtain more reliability and to save energy. For larger volumes (many users) we use larger pumps. Please ask for a custom offer. Installations with lower speed pumps are also possible.



- larger configurations upon request

	HD1	HD2	HD3	HD4
users	1 x 23 L	2 x 23 L	3 x 23 L	4 x 23 L
pressure	100 bar	100 bar	100 bar	100 bar
connection	½"	¾"	1"	1"
power	5.5 kW	2 x 5.5 kW	3 x 5.5 kW	4 x 5.5 kW
current	11.2 A	2 x 11.2 A	3 x 11.2 A	4 x 11.2 A
weight	60 kg	130 kg	190 kg	250 kg
dimensions	800 x 400 x 600 mm	1300 x 1100 x 1100 mm	1800 x 1300 x 1100 mm	1800 x 1300 x 1100 mm
tension	3 x 380 - N+T - 50 Hz (other tension values upon request)			



# FOGGERS



Fogging is a method to disinfect areas in which the disinfectant is sprayed very finely creating a kind of mist. The transportation of air guarantees the entire area is treated. The extremely fine droplets (max. 20 micron) make sure all nooks and corners are reached.

## Cold foggers

**Nebulo** is a high-quality cold fogger which is ideal for portable use. This installation has a tank content of 4 L and a fog ejection of approx. 10 m. The size of the drops can be adjusted by means of a knob regulating the rate of flow.

**The Neburotor** has the same characteristics as the Nebulo but a larger reach because of its 360° rotation. In other words: it can be used stationary.

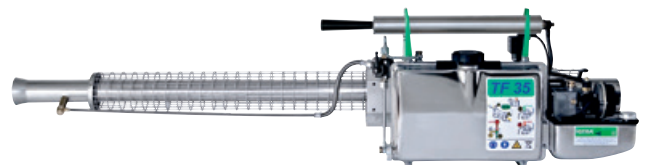
**Unipro 5** is the largest type in the range of cold foggers with a tank content of 26 L and a maximum consumption of 18 L / hour. The spray head can be adjusted in height and resists the most aggressive chemical substances. It has an average range of 25 to 40 m. Built on a stainless steel frame on 2 wheels.



	Nebulo	Neburotor	Unipro 5
article n°	Ignebulo/230	Igneburotor/230	475.4406.001
tank content	4 L	4 L	26 L
electricity	230 V / 700 W	230 V / 700 W	230 V / 9,5 A
weight	3,8 kg	3,8 kg	56 kg
consumption	5 - 12 L/hour	5 - 12 L/hour	12 - 20 L/hour
dimensions	400 x 350 mm	400 x 350 mm	590 x 570 x 116 mm

## Thermofogger

Portable thermofogger. This installation heats the water combined with the disinfectant up to very high temperatures. The steam that exits the machine (still at 60°C) will create condensation upon contact with the air (cooler) and breaks down in small droplets (3-10 micron). The smaller the drop, the better it penetrates into the pores of all kinds of surfaces. The fogger is driven by a gasoline engine.



	TFW35L
Tank content gasoline	1,2 L
Tank content product	5,7 L
consumption chemical substances	max. 10 L/hour
weight	7,9 kg
starter	4 x 1,5 V battery
dimensions	62 x 70 x 262 cm



### Cold foggers - compressed air

Are used for disinfecting areas (cells, barns, greenhouses, corridors, ...). The product is distributed very finely. The drops are microscopically small and float through the area as a fog.



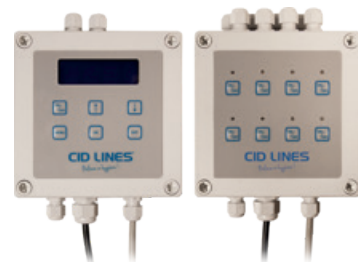
BTS resonator nozzle

Hatcher disinfection nozzle

article n°

0.9.892.01.000

0.9.955.01.000



SHDS

MHDS

description

single hatcher disinfection system including 2 magnetic valves and 2 reducing valves

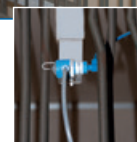
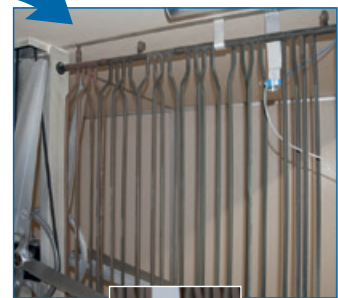
multi hatcher disinfection system

article n°

0.9.885.01.000

system upon request

### Multi hatcher disinfection system



Master unit  
(Programming)

Control unit  
(on/off)

BTS Resonator



## SOLE CLEANERS



This range of stainless steel sole cleaners AISI-304 consists of a driving compartment and a brush compartment. The driving compartment has 2 engines with step-down gear (1 for each brush). These engines are started when the user passes the sensors. The rotation time for the brushes can be set.

During the process, the brushes are sprayed with water and disinfectant through a magnetic valve. The brush compartment holds 2 large brushes. Each brush consists of a stainless steel axle with different plastic holders for the bristles. Our bristles are not made of PVC but of the higher-quality blue Rilsan. The machine can be cleaned easily, without any further tools. The switchboard contains the control and complete protection (thermal and electromagnetic)- of 2 engines and is built-in.

	ZW1000	ZW1500	ZW2000
dimensions	1900 x 850 x 1250 mm	2400 x 850 x 1250 mm	2800 x 850 x 1250 mm
bristle length	1000 mm	1500 mm	2000 mm

## SIMPLE SOLE CLEANER

This sole cleaner is made of stainless steel and is provided with an injector to add disinfectant to the water supply. Upon activation, the bristles are sprayed with this product. The sole cleaner is activated manually by means of a push button in the handle.

	ZWE
power	0.70 kw
dimensions	450 x 650 x 1200 mm



## COMPACT HYGIENE STATION

This hygiene station is used for the controlled passage of employees in and out of the working environment. These machines are made of stainless steel and equipped with horizontal brushes to clean and disinfect both soles at the same time in an easy and efficient way.

The hand disinfection station for the simultaneous disinfection of the hands is integrated into the machine. By inserting both hands at the same time, two sensors activate the disinfection module. Afterwards, the access blockage is released and one person at a time can pass by the carousel. Standard, the machine is equipped with sole cleaning and hand disinfection with access control.

	ZWHDC
power	0.70 kw
bristle length	1000 mm
dimensions	1900 x 1000 x 1800 mm



## DOUBLE HYGIENE STATION



The disinfection bath consists of a stainless steel catchpit and a stainless steel walking grid. The liquid level is a few millimetre higher than the walking grid and the level is kept by means of a magnetic valve. While standing in the disinfectant, the hands are disinfected in the hand disinfection station. In the second part of the disinfection bath the grid is somewhat raised in order to be higher than the disinfectant. This is the dripping zone. The walking grid can be removed for a simple and thorough cleaning.

Upon returning from the production zone, a sole cleaner is used in combination with a carousel. This unit is available with 1000 mm or 1500 mm bristle. Entrance of the production zone: disinfection bath with hand disinfection station and carousel. Exit of production zone: sole cleaner with carousel.

- option: this passage can be provided with brushes on both sides instead of a disinfection bath

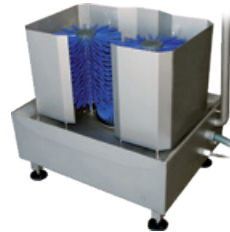
	DZW1000	DZW1500	2DZW1000	2DZW1500
power	0.70 kw	0.70 kw	0.70 kw	0.70 kw
supply	3 x 400 V	3 x 400 V	3 x 400 V	3 x 400 V
bristle length	2 x 1000 mm	2 x 1500 mm	4 x 1000 mm	4 x 1500 mm
dimensions	1900 x 1800 x 1250 mm	2400 x 1800 x 1250 mm	1900 x 1800 x 1250 mm	2400 x 1800 x 1250 mm



## BOOT CLEANER

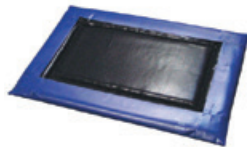
This solid stainless steel construction guarantees a thorough cleaning of boots with a minimal power consumption. The boot cleaner can be used in combination with a sole cleaner or autonomously. The functional construction guarantees a quick and thorough cleaning of boots with a minimal power consumption. The rotating brushes are started by means of a sensor. Disinfectants are automatically added by means of a venturi spraying the solution onto the brushes. The machine is built entirely out of stainless steel in accordance with EC standards and complies with the highest quality requirements. The unit is delivered ready for use, except for the draining accessories.

- option: this passage can be provided with brushes on both sides instead of a disinfection bath



	LWA	LW
power	0.70 kw	0.70 kw
dimensions	700 x 585 x 1300 mm	700 x 585 x 1300 mm
brush diameter	260 mm	260 mm
brush length	310 mm	310 mm

## BOOT DISINFECTION



description

small disinfection mat  
600 x 900 mm

large disinfection mat  
1800 x 900 mm

disinfection basin  
600 x 400 x 150 mm

article n°

0.9.209.01.000

0.9.212.01.000

0.9.349.01.000



# HAND DISINFECTION STATION

Both hands are inserted into the station. The console contains 2 sensors and 4 spray nozzles. Both hands are detected. After activation by the sensors, both hands are sprayed (top and bottom) with alcohol-based disinfectant. If this is done correctly, 1 of the LED lamps will be activated and the carousel will be unlocked. This lasts for about one second, and guarantees perfect access control.

- mounted on foot upon request
- the hand disinfection station is available in 2 versions, with or without carousel
- this unit has a stainless steel cupboard in which the drive train is situated for the carousel, the stainless steel console to detect and spray hands, the steering cupboard and the pump



	HDT	HDC
power	0.30 kw	0.30 kw
carousel	no	yes
dimensions	440 x 570 x 300 mm	444 x 1100 x 800 mm

# WASHBASIN / WASH GUTTERS

The stainless steel washbasins are very strong and solid. They have been glass-shot blasted for a smooth surface and the rounded edges guarantee optimal hygiene. The taps are sensor-controlled. The high-quality materials guarantee a long lifespan and reliability.

- the wash gutters are available with 2 to 5 taps
- option: all wash gutters are available on foot (price upon request)



	HW1	HW2	HW3	HW4	HW5
number of taps	1	2	3	4	5
power source	230 V	230 V	230 V	230 V	230 V
dimensions	500 x 525 x 450 mm	1000 x 525 x 450 mm	1500 x 525 x 450 mm	2000 x 525 x 450 mm	2500 x 525 x 450 mm



## DISPENSERS



description

hand soap dispenser  
1,20 L - PVC

article n°

0.9.123.01.000

hand soap dispenser  
1 L - stainless steel ophardt

0.9.100.01.000

hand soap dispenser  
LCP-T 1 L

0.9.137.01.000



soap dispenser 1 L

HS1000K



description

touchless hand soap  
dispenser 1 L

article n°

0.9.140.01.000

cover for hand soap  
dispenser stainless steel 1 L

0.9.861.01.000

cover for hand soap  
dispenser LCP-T 1 L

0.9.860.01.000

bottle for hand soap  
dispenser, 1 L - ophardt

0.9.124.01.000



description

stainless steel paper basket  
40 L

article n°

AFK40

dimensions

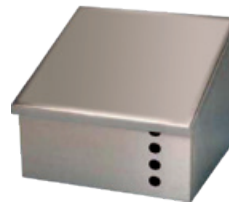
380 x 250 x 450 mm



hair net dispenser

3651

400 x 180 x 560 mm



universal dispenser

3032

300 x 280 x 145 mm

stainless steel paper roll  
dispenser

4297

280 x 250 x 400 mm



description

dispenser for Mint Cream  
2,5 L

article n°

0.9.872.01.000

# SIPHON PUMPS



pump hovi 30 ml - 25 L



pump eng 30 ml - 25L/60L  
din 61



pump 25L/60L major, 100ml



pump 5L - 5ml

description

article n°

0.9.004.01.000

0.9.006.01.000

0.9.016.01.000

0.9.007.01.000



pump barrel 210 L major,  
100ml



pump barrel 210 L ezi-action



pump 2 ml Kenotest - din 28



pump 500 ml 4cc pharma

description

article n°

0.9.133.01.000

0.9.139.01.000

0.9.306.01.000

0.9.128.01.000



pump meca 4 L RS4 + cover



pump meca inox 4L  
metal cover



pump barrel red siphon



siphon pump yellow  
polypropylene

description

article n°

0.9.131.01.000

0.9.107.01.000

0.9.027.01.000

0.9.865.01.000



pump 5L - HOVI (30ml)

description

article n°

0.9.040.01.000



# DOSATRON

The dosatron is connected to the water distribution network and uses the water pressure as sole driving force for the motor piston. It drives a dosage piston that aspires the concentrate at the set percentage and mixes it with the water. The solution is then distributed via the pipeline network.

- other types and flow rates upon request

## TECHNICAL INFO

flow rate	min 10 L/h - max 2500 L/h
working pressure	0,3 - 4 bar
water temperature	min. 5°C - max 40°C
dosage	0,2 - 2,0 % (type D25RE2)
	1,0 - 5,0 % (type D25RE5)
	3,0 - 10,0 % (type D25RE10)
connection	3/4" M
pressure loss	0,3 - 1,9 bar
maximum aspiration	4 m

article n°	type	dosage
------------	------	--------

## ALKALINE CONCENTRATES

0.9.400.01.000	D25RE2AF	0,2 - 2,0 %
0.9.401.01.000	D25RE5AF	1,0 - 5,0 %
0.9.402.01.000	D25RE10AF	3,0 - 10,0 %

## ALKALINE CORROSIVE CONCENTRATES (EXTERNAL INJECTION)

0.9.403.01.000	D25RE2IEAF	0,2 - 2,0 %
0.9.404.01.000	D25RE5IEAF	1,0 - 5,0 %
0.9.405.01.000	D25RE10IEAF	3,0 - 10,0 %

## ACID CONCENTRATES

0.9.431.01.000	D25RE2VF	0,2 - 2,0 %
0.9.411.01.000	D25RE5VF	1,0 - 5,0 %

## ACID CORROSIVE CONCENTRATES (EXTERNAL INJECTION)

0.9.406.01.000	D25RE2IEVF	0,2 - 2,0 %
0.9.407.01.000	D25RE5IEVF	1,0 - 5,0 %
0.9.408.01.000	D25RE10IEVF	3,0 - 10,0 %



# ACCESSORIES DOSATRON



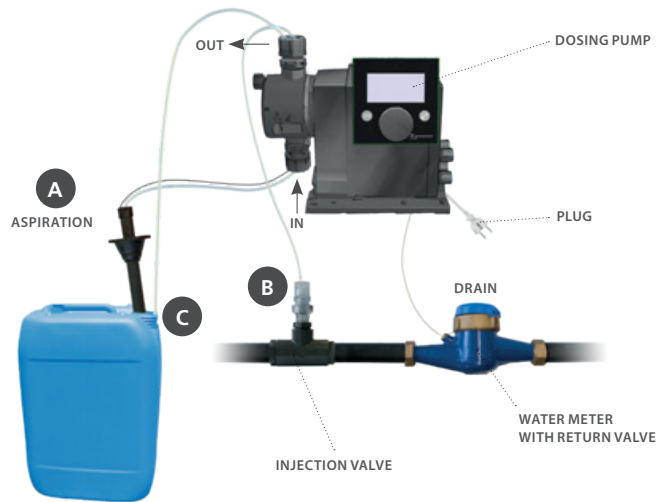
description	filter dsa 350 micron	pressure reducer 3/4" V	flow rate reducer M/F 411/ min 3/4", brass	BA return valve 3/4 M x FT
article n°	0.9.019.01.000	8.9.231.01.000	8.9.232.01.000	8.9.233.01.000



# DOSING PUMP



description dosing pump CIDDOS AP6  
 article n° 410.2101.000



# PROMAX

Dosing systems for filling buckets or bottles.



	Promax for buckets	Promax for bottles
article n°	PXB1F16S0000	PXB1F04S0000
rate of flow detergent	16 L/m	4 L/m
working pressure	1 - 9 bar (ideally: 2 - 4 bar)	1 - 9 bar (ideally: 2 - 4 bar)
temperature	max. 70°C	max. 70°C
dimensions	220 x 100 x 120 mm	220 x 100 x 120 mm
activation system	knob	sliding switch



## PERISTALTIC PUMPS

**Seko PR 1** is a peristaltic rinsing agent pump for small dishwashers in a speed-controlled version. The rate of flow is controlled by a potentiometer.

**Seko PR4** is a detergent pump for small dishwashers in a speed-controlled version. The rate of flow is controlled by a potentiometer.



**Twindose 10** is an automatic dosing pump for detergent and rinsing agent. This pump is suitable for covered dishwashers. Thanks to its 6 different working modes, **Saier MCS 2105 concept** is a multifunctional dosing pump. It can be used as a time-controlled pump and can be controlled inductively. Thanks to its rotors, the pump hoses can be replaced easily and quickly.

**Saier MCD 2117 concept** is a high-quality dosing unit on conductivity with an integrated hose pump for measuring the quantity of detergent in (tunnel) dishwashers. The Concept 2117 has a display showing conductivity, current conductivity in %, temperature and time. The pre- and after-dosing can be set between 1.5 and 20 minutes.

**Saier DSP 9805-II** is a hose pump which is controlled by a microprocessor and which doses liquids. With a rate of flow of 50 litres per hour, this pump is suitable for larger dishwashers (crate washers). The conductivity is measured by means of a conductive or inductive sensor. It is possible to connect an additional pump (Saier DSP 9612) to dose anti-foaming or rinsing agent.

**Saier DSP 9612** is a hose pump for applications without counterpressure. This pump has a rate of flow of 50 litres per hour. This pump is mainly used as an add-on for the Saier DSP 9805 for dosing anti-foaming or rinsing agent.



	Seko PR1	Seko PR4	Twindose 10
article n°	0.9.138.01.000	0.9.116.01.000	GTR04R01Y2002
tension	230 V - 50 Hz	230 V - 50 Hz	24 - 115 - 230 V
rate of flow detergent	0,2 - 1,0 L/h	0,6 - 4,0 L/h	1 - 7 L/h
rate of flow rinsing agent	/	/	0.18 - 1 L/h
pressure	max 3 bar	max 3 bar	max. 3 bar
power	3.5 W	3.5 W	8 W
dimensions	103 x 82 x 92 mm	103 x 82 x 92 mm	195 x 168 x 110 mm



	Saier MCD 2117 concept	Saier MCS 2105 concept	Saier DSP 9805-II	Saier DSP 9612
article n°	8.9.400.01.000	8.9.403.01.000	8.9.401.01.000	8.9.402.01.000
tension	230 VAC (± 10%)	200 - 240 V (± 10%)	230 VAC (± 10%)	230 V (± 10%)
rate of flow detergent	9 L/h	9 L/h	50 L/h	50 L/h
pressure	2 bar	2 bar	0,5 bar	0.5 bar
power	20 W	16 W	30 W	25 W
dimensions	92 x 170 x 130 mm	92 x 170 x 130 mm	310 x 190 x 92 mm	175 x 145 x 85 mm

## ASSEMBLY



description	hose pump 2117 MCD + dishwasher 1 L + lamp	hose pump 2105 MCS + dishwasher 1L + lamp	hose pump DSP 9805-II 833 ml/min + lamp	hose pump DSP 9612 833 ml/min 24 v + box
article n°	8.9.430.01.000	8.9.433.01.000	8.9.431.01.000	8.9.432.01.000

## LAUNDRY

These automatic dosing systems are used to provide washing machines with the required product. With 4 or 5 hose pumps it gives your machine the right dose of product at the right time.



	4 x 18 L	5 x 18 L	4 x 24 L	5 x 24 L
description	4 pump system smart P plus	5 pump system smart P plus	4 pump system smart S plus	5 pump system smart S plus
article n°	8.9.191.01.000	8.9.194.01.000	8.9.192.01.000	8.9.201.01.000
number of pumps	4	5	4	5
flow	18 L/H	18L/H	24L/H	24L/H
tension	230V	230V	230V	230V

## NECESSITIES



description	mounting plate PVC with pre-drilled holes	levelcontroller for a maximum of 10 products	inlet manifold 4 x diameter 10	inlet manifold 6 x diameter 10
article n°	8.9.203.01.010	8.9.193.01.000	8.9.195.01.000	8.9.178.01.000



description	suction pipe with empty indication 25L diameter 10	male plug 230V rubber	reinforced hose 10 x 16
article n°	8.9.158.01.000	AL1439190	AK5514



## CIP PROJECT

CIP Cleaning is a (semi) automatic cleaning process that is used frequently in the food and drinks industry. A CIP installation guarantees a fast, efficient and constant cleaning and disinfection result with limited manual intervention.

CID LINES can provide the CIP dosing installation as well as guidance in creating new innovative equipment as well as optimizing existing CIP installations.

- project upon request







## CLAW BATH



description

black foot basin  
2100 x 750 x 200 mm

article n°

0.9.631.01.000



## CLOTHS



description

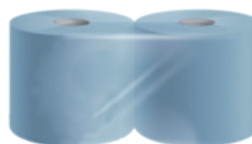
udder cloths yellow  
25 pcs (chicoppee)

article n°

0.9.308.25.000

microfiber cloth blue  
25 pcs

0.9.038.01.000

pre-milking paper 40 pcs  
(per 2 rolls of 1000 sheets)

0.9.313.01.000

dispenser for pre-milking  
paper

0.9.033.01.000

## DIPPING CUPS



description

dipping cup flat

article n°

0.9.301.01.000

dipping cup double  
aspiration

0.9.319.01.000



dipping cup return

0.9.302.01.000



dipping cup no return

0.9.303.01.000



description

strip cup

article n°

0.9.347.01.000



foam cup

0.9.312.01.000



udder hygiene spray

0.9.304.01.000



tank for dipping cups

0.9.314.01.000

## PURE FOAMER

The ideal tool for an effective pre-treatment, a system that optimizes the milking process and makes pre-milking easier than ever! The Pure Foamer is simple, economic, reliable, powerful and effective.

Increases working comfort during milking, it is no longer necessary to pinch the foam cup; all you need to do is push the lever. Easy and quickly to install and to use. Considerably reduces milking times. No compressor required, works on vacuum milking machine.

- 1 year guarantee
- can be adjusted to all sorts of milking stables: swing-over, parallel, fishbone and carousel

	farm model	shop model	van model	truck model
description	pure foamer	pure foamer 220 V with sink	pure foamer 12 V	pure foamer 24 V
article n°	0.9.399.01.000	0.9.451.01.000	0.9.452.01.000	0.9.453.01.000



## PURE DIPPER

### farm model

description	pure dipper
article n°	0.9.553.01.000



## SPRAYER KIT

### farm model

description	sprayer kit
article n°	0.9.554.01.000



## SPARE PARTS

				
description	gun body (vs26b) for pure foamer/dipper	foamer head (fo27) - pure foamer	dipper head (dp27) - pure dipper	spray head (vs27bf)
article n°	0.9.456.01.000	0.9.457.01.000	0.9.459.01.000	0.9.458.01.000
				
description	spray pump kit	service kit pump (sup22: sup2 + sup9)	service kit gun (vs32)	
article n°	0.9.465.01.000	0.9.466.01.000	0.9.467.01.000	



## CLOTHS AND HANDLES



extra micro fiber cloth 12 pcs

description

article n°

0.9.322.01.000



telescopic handle 2 x 1,5 m  
alu 402

0.9.604.01.000



telescopic handle 2 x 1,5m  
bi-pro

0.9.627.01.000

## BROOMS



broom 25 cm - polyester

description

article n°

0.9.602.01.000



broom 35 cm - polyester

0.9.617.01.000



broom 25 cm for trucks  
bi-pro

0.9.626.01.000



broom 33 cm for trucks  
bi-pro

0.9.632.01.000



hand brush polyester  
short handle

description

article n°

0.9.603.01.000



tank brush halfround

0.9.619.01.000

## EXTRA



carwash suction pads  
100 pcs

description

article n°

0.9.665.01.000



wiper cover Kenotek  
1000 stuks

0.9.323.01.000







## COLLECTION TRAYS



description

collection tray plastic  
small 1300 x 750 x 400 mm

tray for IBC

article n°

0.9.639.01.000

0.9.656.01.000

## BOTTLE ACCESSORIES



description

adapter 200 L barrel - orange

adapter barrel 2 inch blue

adapter 1000 L container

tap 25 L can - din 61

article n°

0.9.009.01.000

0.9.025.01.000

0.9.010.01.000

0.9.001.01.000



description

drain 25 L can

tap barrel - 2 inch

key - din 61

key barrel 200 L

article n°

0.9.014.01.000

0.9.002.01.000

0.9.015.01.000

0.9.026.01.000





## TESTERS



description

dish Kenotest

article n°

0.9.318.01.000



test strips Cid Clean

0.9.700.01.000

test strips peracetic acid  
5 - 50 mg/L

0.9.715.01.000

test strips peracetic acid  
500 - 2000 mg/L

0.9.720.01.000



description

test strips peracetic acid  
100 - 500 mg/L

article n°

0.9.717.01.000



test strips hardness

0.9.709.01.000



test strips chlorine dioxide

0.9.721.01.000



test strips Virocid / Cid 210

0.9.701.01.000



description

test strips Cid 20 / Eco Des

article n°

0.9.702.01.000



pH indicator

0.9.705.01.000



chlorine tester

0.9.706.01.000

test strips Pro Clean  
100 - 25 pcs

8.9.228.01.000



description

titration kit

article n°

0.9.704.01.000

## MEASURING CUPS



measuring cup 1 L



measuring cylinder 1 L

description

article n°

0.9.013.01.000

0.9.022.01.000

## METERS



conductivity meter



ph indicator (electronic)

Kenocell scan  
somatic cells analyzer

description

article n°

0.9.708.01.000

0.9.707.01.000

0.9.329.01.000





## TERMS OF GUARANTEE

1. The general term of guarantee is 1 year as of the date of the invoice.
2. The guarantee only applies to damages or deficiencies caused by errors in materials or production.
3. In case of incorrect usage or assembly, all guarantee claims become void (e.g. incorrect assembly of electricity connections). Also when the product is visibly polluted or violently damaged, all guarantee claims become void. Problems with humidity can never give rise to guarantee claims.
4. The guarantee does not apply to damage to fragile and/or wearing parts, such as glass, plastics, rubber, caused or not by inaccurate use. (e.g. hoses, lances, nozzles, brooms, squeegees, ...).
5. The guarantee does not apply to damage caused by:
  - the chemical and electrochemical effects of water
  - abnormal environmental circumstances in general
  - improper circumstances
  - contact with aggressive substances
6. The guarantee does not apply to flaws caused by transportation damages beyond our responsibility, inaccurate installation or assembly, improper use, faulty maintenance or the violation of usage or assembly instructions.
7. The guarantee does not apply when the deficiency was caused by repairs or interventions by third parties who are not competent or specialised or when the product was equipped with accessories or parts that are not original and hence cause a deficiency.
8. Guaranteed repairs do not prolong the term of guarantee nor do they start a new term of guarantee.
9. If guaranteed parts must be delivered urgently, the costs of transportation are for the client. In all other cases, they are for our account.
10. All equipment (e.g. pumps, electrical parts, engines) that are covered by the guarantee and that are deficient must be sent to CID LINES N.V. immediately. This must be reported in writing using our standard guarantee form. This form must be sent to [info@cidlines.com](mailto:info@cidlines.com).

## GENERAL CONDITIONS OF SALE AND INVOICING

1. Unless otherwise agreed in writing, only the general conditions of sale and invoicing below apply.
2. Unless otherwise agreed in writing, our offers are only valid for information. Every order is binding for the customer, yet is only binding for us after written confirmation. Any (alleged) mistakes in the order confirmation must be reported in writing within three days after this confirmation. All offers are always subject to possible fluctuations in prices of materials, currency or wages.
3. The terms for the delivery or execution of works, as confirmed by us, will always be respected as far as possible. They can never warrant cancellation or claims for damages.
4. It is only possible to modify an order after written agreement and upon payment of any additional costs.
5. Unless explicitly otherwise agreed, all our invoices must be paid in leper within 7 calendar days after the date of the invoice, without reduction or discounts.
6. If the invoice has not been paid in full during the aforementioned term, as of the 8th day we will be entitled to payment of an interest as provided by article 5 of the Act of 2/8/2002, as is our right, without proof of default. In addition, this will also apply to all our transactions with non-merchants, without the acquired interest rate being lower than 12 percent on an annual basis.
7. By not paying within the aforementioned term, our contractant acknowledges having made a contractual error and causing us damage. This damage, including some recovery costs as referred to in Article 6 of the Law of 2/8/2002, should be reimbursed by our co-contractor and is estimated as follows: compensation is estimated to cover the extrajudicial costs and administrative work increase equal to 15% of the outstanding balance with a minimum of 75 euros and a maximum of 2,500 euros, plus a lump sum of 13 euros per reminder and any annotation fee; if we hire third parties for the amicable recovery of the amounts requested, these costs will be charged to our contractor; if we in addition to judicial recovery will need to carry out a legal recovery towards our contractor, as far as they are bound by law of 2/8/2002, they should also reimburse all costs incurred by us were in judicial recovery without however, this compensation in comparison will be lower than the amount obtained after application of the rate for the sums, which are recoverable costs due to the provision of certain material acts as established by the King in pursuance of article 1022 of the Judicial Code.
8. Every delay in payment, whatever the reason, gives us the right to cancel the contract and demand immediate payment of all amounts due. We reserve the right to write out invoices for partially delivered work or installed equipment. We reserve the right to invoice goods as they are delivered, even if that is merely partial. Payments are always added to the interests that are due according to the current conditions, then to the damages and collection costs, and only then to the invoiced amounts, in which the oldest come first, no matter the remarks or mentions of the contractant with his payment. In case of late payment, we reserve the right to declare any reductions void and to demand reimbursement thereof, even retroactively.
9. All complaints must be made upon delivery, unless agreed otherwise.
10. Only the courts of the judicial district of leper have competence in this matter.
11. Every signer of an order, pick-up or installation document shall be bound jointly with the legal person on whose behalf he or she acts.
12. All objects and sold goods remain our property until full payment has been made by the customer. The buyer can hence not dispose of goods that have not been paid in full.



**CID LINES®**

Waterpoortstraat 2 • 8900 Ieper - Belgium • T +32 57 21 78 77 • F +32 57 21 78 79 • info@cidlines.com • www.cidlines.com